

PREMIUM POS PRINTER

Gainscha Training Session

Premium POS Printers Series

GA-S300



GA-F3300





GA-S300

Introduction

MAIN SPEC

Premium Receipt Printer GA-S300



Print Method
direct thermal line



Emulation
ESC/POS & Line/T



Paper Width
79.5±0.5mm



Interface
USB+Serial+Ethernet



Resolution
300dpi



Print speed
200mm/s



Power Supply
DC 24V 2.5A



Operating System
Windows/Linux/OPOS



Net Weight
1.23KG



Dimension
160 x 132 x 123mm



Innovative Design

Premium Receipt Printer GA-S300



Built-in LED display
easy printer set up:
print speed, print density, baud-rate and more



Intuitive Display Setting



turn on the power

Advanced paper-saving function

- 300dpi print resolution to set new industry standard
- Help reduce paper usage by **30%** and support 50% more content printed compared with traditional 203dpi printer



Compatible System & Emulation

- Windows, Linux, OPOS
- EPSON ESC/POS, STAR Line/T
- Easy Windows driver installation through simple operation in U disk



STAR Line/T

Windows

Linux

OPOS

EPSON ESC/POS

All-in-one Ports Handle Printing Tasks Simultaneously

- Built-in USB, RS232, Ethernet standard communication ports
Three interface data flow no mix, all receipts can be completely printed when three interfaces received printing data at the same time
- USB UTP - and USB Virtual COM port - mode supported
- Support extended function, firmware upgrade
- Wi-Fi / Bluetooth options



Gainscha

Premium
New Generation
Receipt Printer
GA-S300





GA-F3300

Introduction

SPECIFICATION

Premium Receipt Printer GA-F3300



Print Method
direct thermal line



Emulation
ESC/POS & Line/T



Paper Width
79.5±0.5mm



Interface
USB+Serial+Ethernet



Resolution
300dpi



Print speed
200mm/s



Power Supply
AC 110V/220V, 50~60Hz



Operating System
Windows/Linux/OPOS



Net Weight
1.35KG



Dimension
189 x 146 x 134mm



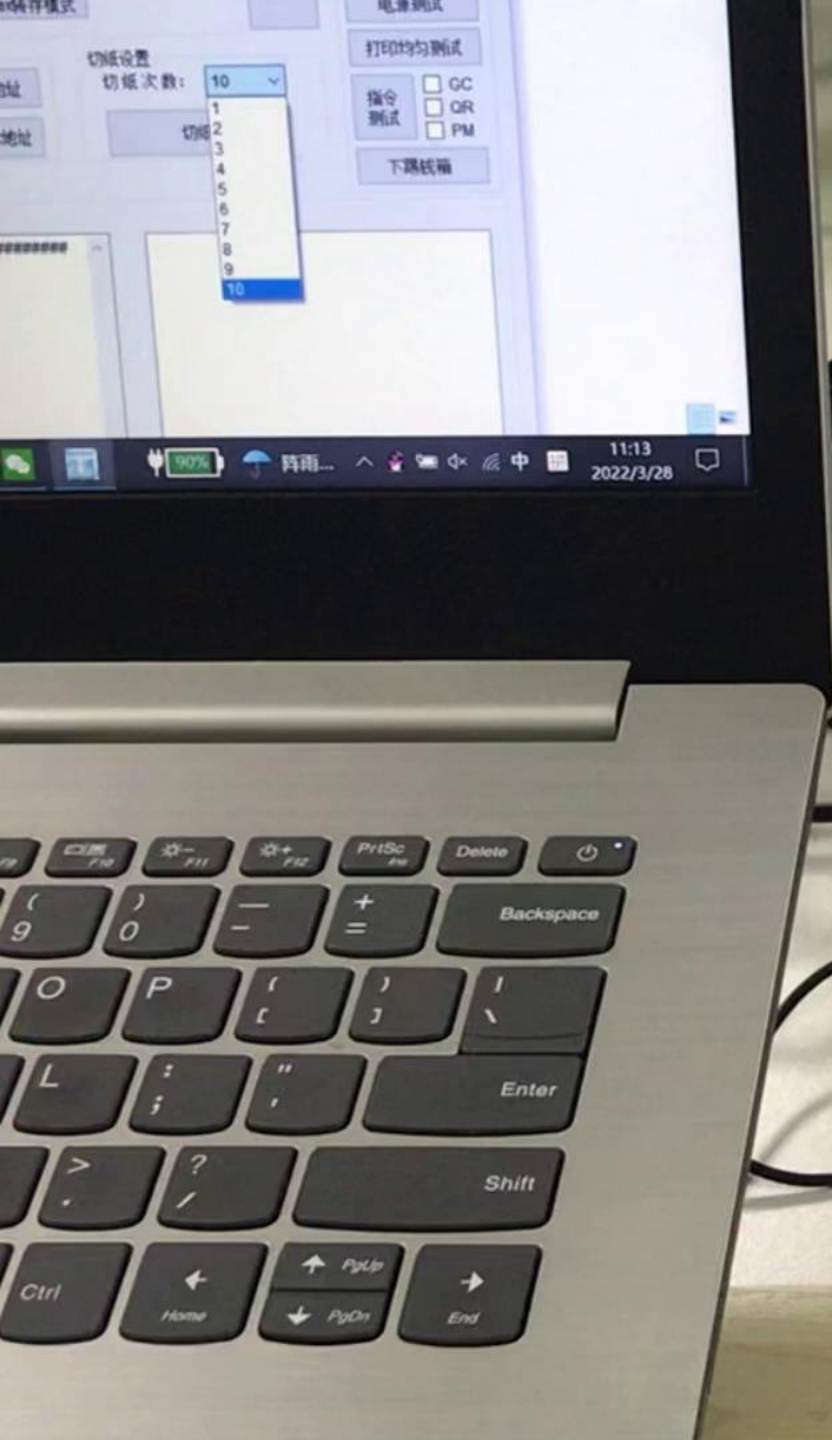
USER FRIENDLY DESIGN

Premium Receipt Printer GA-F3300



Flashing light
Loud alarm
for order notification





Front-Exit Fast Transaction

- Front paper exit with auto cutter
- smooth paper feeding
- eliminate paper jam



Paper-saving, green commitment



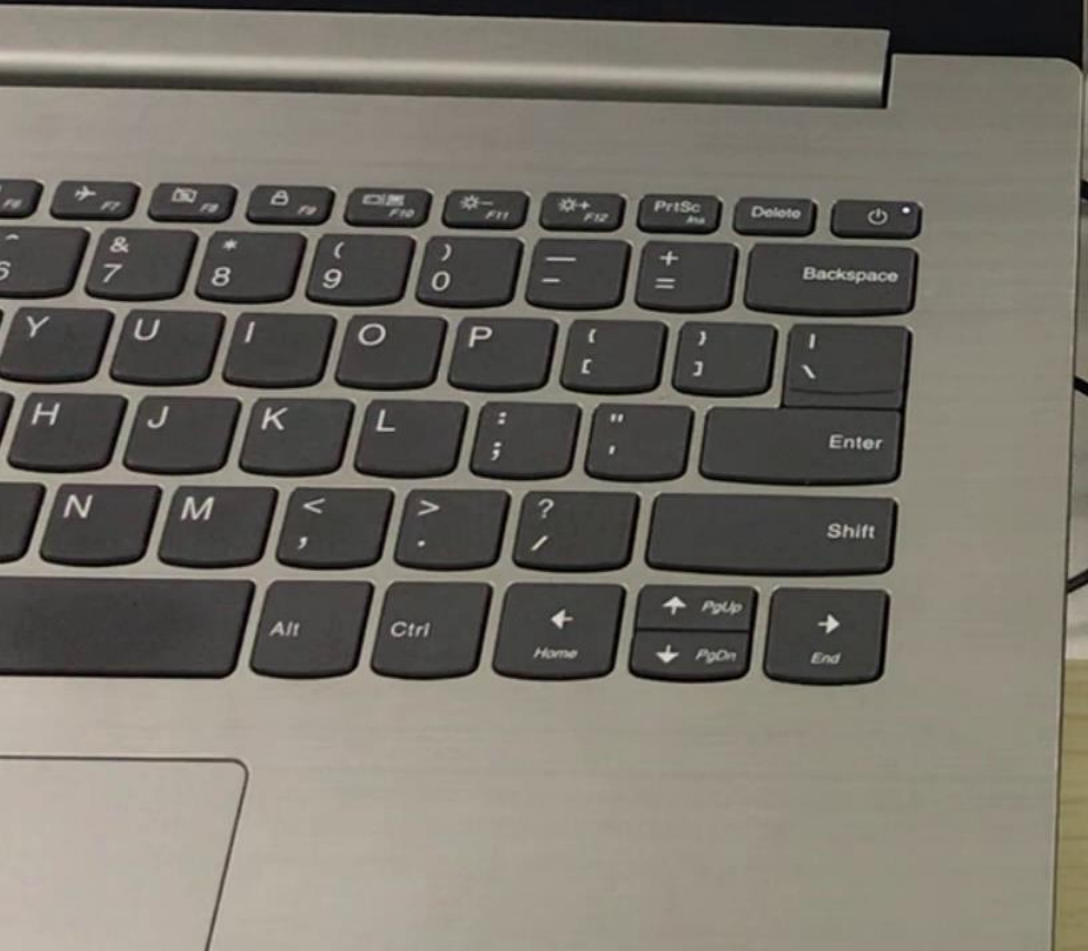
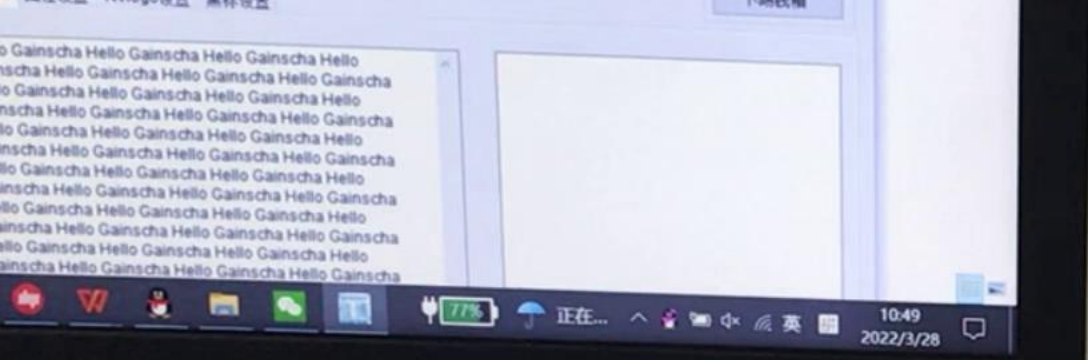
300DPI Print



203DPI Print



- 300dpi print resolution to set new industry standard
- Help reduce paper usage by **30%** and support 50% more content printed compared with traditional printer



1

Barcode Type:

UPC-A	UPC-E
EAN(JAN)13	EAN(JAN)8
CODE39	CODABAR
ITF	CODE93
CODE128	QRcode

300DPI

DIP-8	Function	ON	OFF
SW-1	Select cutter	No	Yes
SW-2	Select beeper	Yes	No
SW-3	Select print density	Dark	Light
SW-4	Two-byte character code	No	Yes
SW-5	Characters per line	42	48
SW-6	Select cashdrawer	Yes	No
SW-7	Select baudrate		
SW-8	Select baudrate		

SW-7	SW-8	Baudrate
ON	ON	38400
OFF	ON	115200
ON	OFF	9600
OFF	OFF	19200

Lbcm

Current selection:

Pin	1	2	3	4	5	6	7	8
ON		*	*	*		*		
OFF	*				*		*	*

30% dark

```
!"#$%&'()*+,-./0123456789:;<=>?@ABCDEFGHIJKLMNopqrstuvwxyz[\]^_`abcd
!"#$%&'()*+,-./0123456789:;<=>?@ABCDEFGHIJKLMNopqrstuvwxyz[\]^_`abcde
!"#$%&'()*+,-./0123456789:;<=>?@ABCDEFGHIJKLMNopqrstuvwxyz[\]^_`abcdef
!"#$%&'()*+,-./0123456789:;<=>?@ABCDEFGHIJKLMNopqrstuvwxyz[\]^_`abcdefg
!"#$%&'()*+,-./0123456789:;<=>?@ABCDEFGHIJKLMNopqrstuvwxyz[\]^_`abcdefgh
```

```
!"#$%&'()*+,-./0123456789:;<=>?@ABCDEFGHIJKLMNopqrstuvwxyz[\]^_`abcdefghijklmnopqrstuvwxyz
!"#$%&'()*+,-./0123456789:;<=>?@ABCDEFGHIJKLMNopqrstuvwxyz[\]^_`abcdefghijklmnopqrstuvwxyz{
!"#$%&'()*+,-./0123456789:;<=>?@ABCDEFGHIJKLMNopqrstuvwxyz[\]^_`abcdefghijklmnopqrstuvwxyz{
!"#$%&'()*+,-./0123456789:;<=>?@ABCDEFGHIJKLMNopqrstuvwxyz[\]^_`abcdefghijklmnopqrstuvwxyz{
!"#$%&'()*+,-./0123456789:;<=>?@ABCDEFGHIJKLMNopqrstuvwxyz[\]^_`abcdefghijklmnopqrstuvwxyz{1}
```

*** Completed ***

Barcode Type:

UPC-A	UPC-E
EAN(JAN)13	EAN(JAN)8
CODE39	CODABAR
ITF	CODE93
CODE128	QRcode

203DPI

DIP-8	Function	ON	OFF
SW-1	Select cutter	No	Yes
SW-2	Select beeper	Yes	No
SW-3	Select print density	Dark	Light
SW-4	Two-byte character code	No	Yes
SW-5	Character per line	42	48
SW-6	Cutter with cash drawer	Yes	No
SW-7	Select baudrate		
SW-8	Select baudrate		

SW-7	SW-8	Baudrate
ON	ON	38400
OFF	ON	115200
ON	OFF	9600
OFF	OFF	19200

scm

```
!"#$%&'()*+,-./0123456789:;<=>?@ABCDEFGHIJKLMNop
!"#$%&'()*+,-./0123456789:;<=>?@ABCDEFGHIJKLMNopQ
!"#$%&'()*+,-./0123456789:;<=>?@ABCDEFGHIJKLMNopQR
!"#$%&'()*+,-./0123456789:;<=>?@ABCDEFGHIJKLMNopQRS
!"#$%&'()*+,-./0123456789:;<=>?@ABCDEFGHIJKLMNopQRST
```

Easy Software Integration, Binding

- Windows, Linux, OPOS
- EPSON ESC/POS, STAR Line/T
- Easy Windows driver installation through simple operation in U disk mode Application



STAR Line/T

Windows

Linux

OPOS

EPSON ESC/POS

Gainscha Utility www.gainscha.com.tw

G80 Utility Clinet Beta v2.17

Communication interface

RS232 USB Ethernet RS232

USB Printing Device

Ethernet

115200

Interfaces Test

Others

Language : English

Restart Printer

Data Transfer **Parameter Setting** NV Logo Printer Statistics Firmware Upgrade

Only download checked parameters to printer.

Operations For All Parameters

Select Clear Load Set

Communication Parameter Setting

Set IP

Set Gateway

Set Mac Addr.

Disconnect time

Connections

Net Speed

DHCP

USB Mode

USB Port

Printer Property Settings

Code Page

0:PC437 SetCodePage Print Code Page

Set Language Density

FontB Reprint PaperOut

Customize Font Paper Width

Feed Direction AutoCut HeadClose

Motor Speed Vertical Offset

Motor Acce. Mac Display

Speed QRCode

Density Mode PrintTest With Logo

DIP Switch

Software DIP Setting

Cutter Enable

Beeper Disable

Density Normal

Chinese Prohibited No

48/42 Characters 48

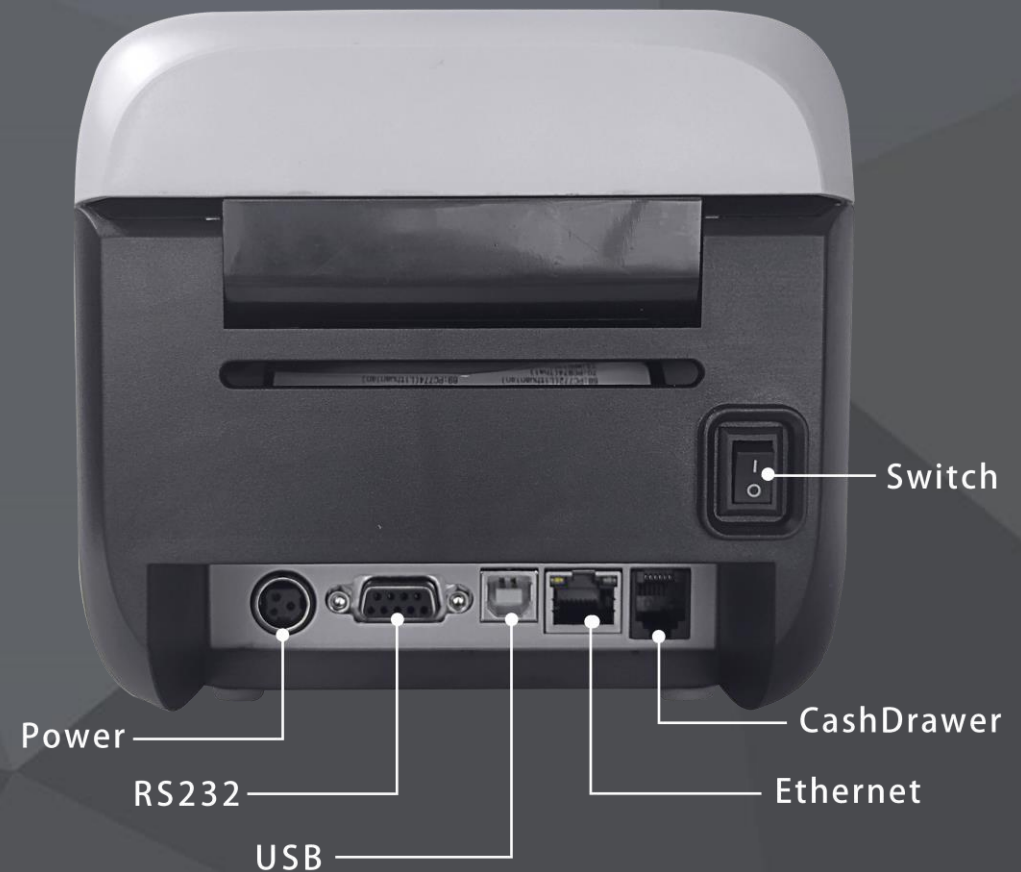
Drawer Disable

Baud Rate

Set DIP

Multi-Connection and Printing Simultaneously

- Built-in USB, RS232, Ethernet standard communication ports
Handle multi-tasks at the same time, no data mix
- Support extended function, firmware upgrade



Gainscha

Premium
New Generation
Receipt Printer
GA-F3300



Premium POS Printer Family

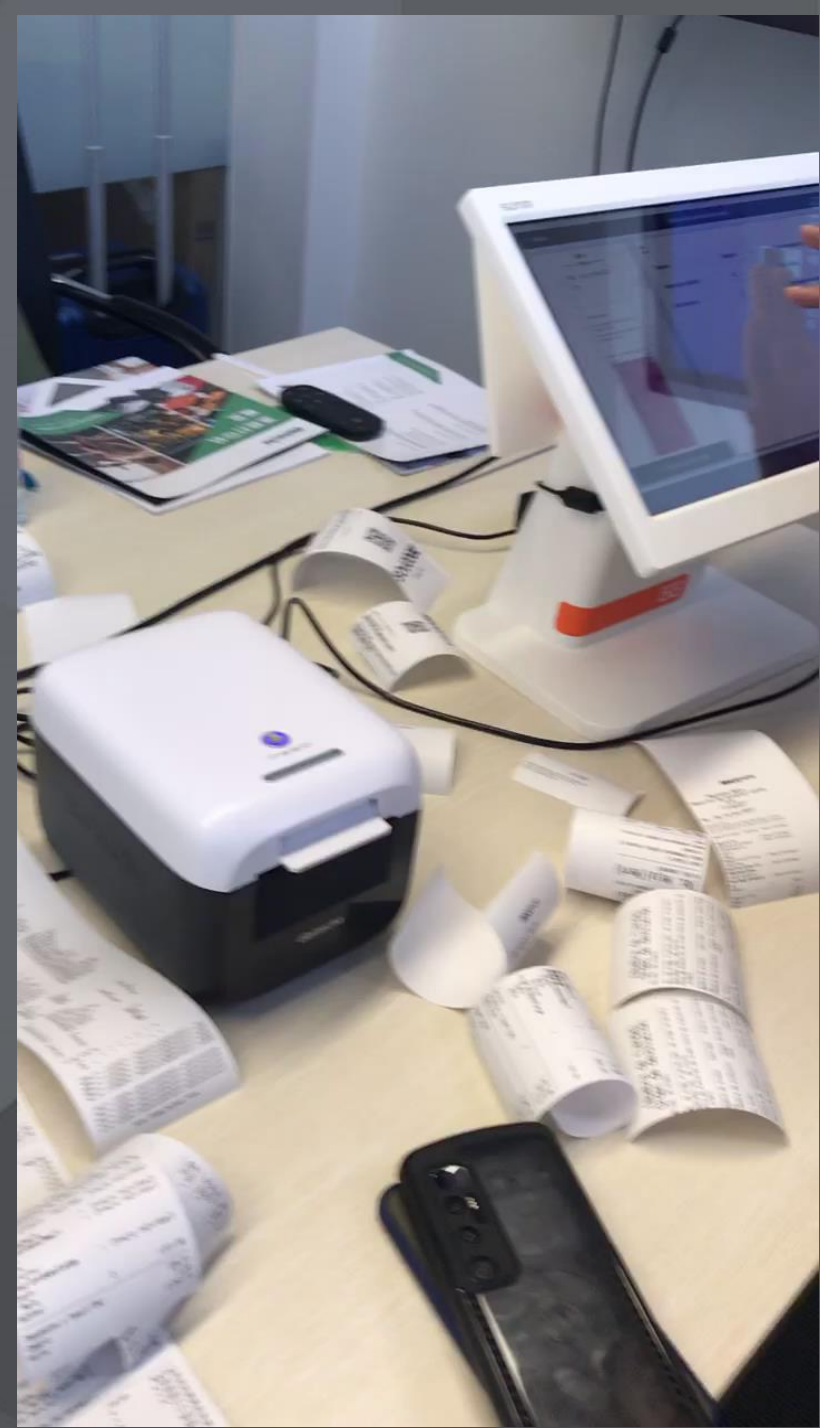
Free Sample for trial



GA-S300



GA-F3300



Thank you!
See you next time